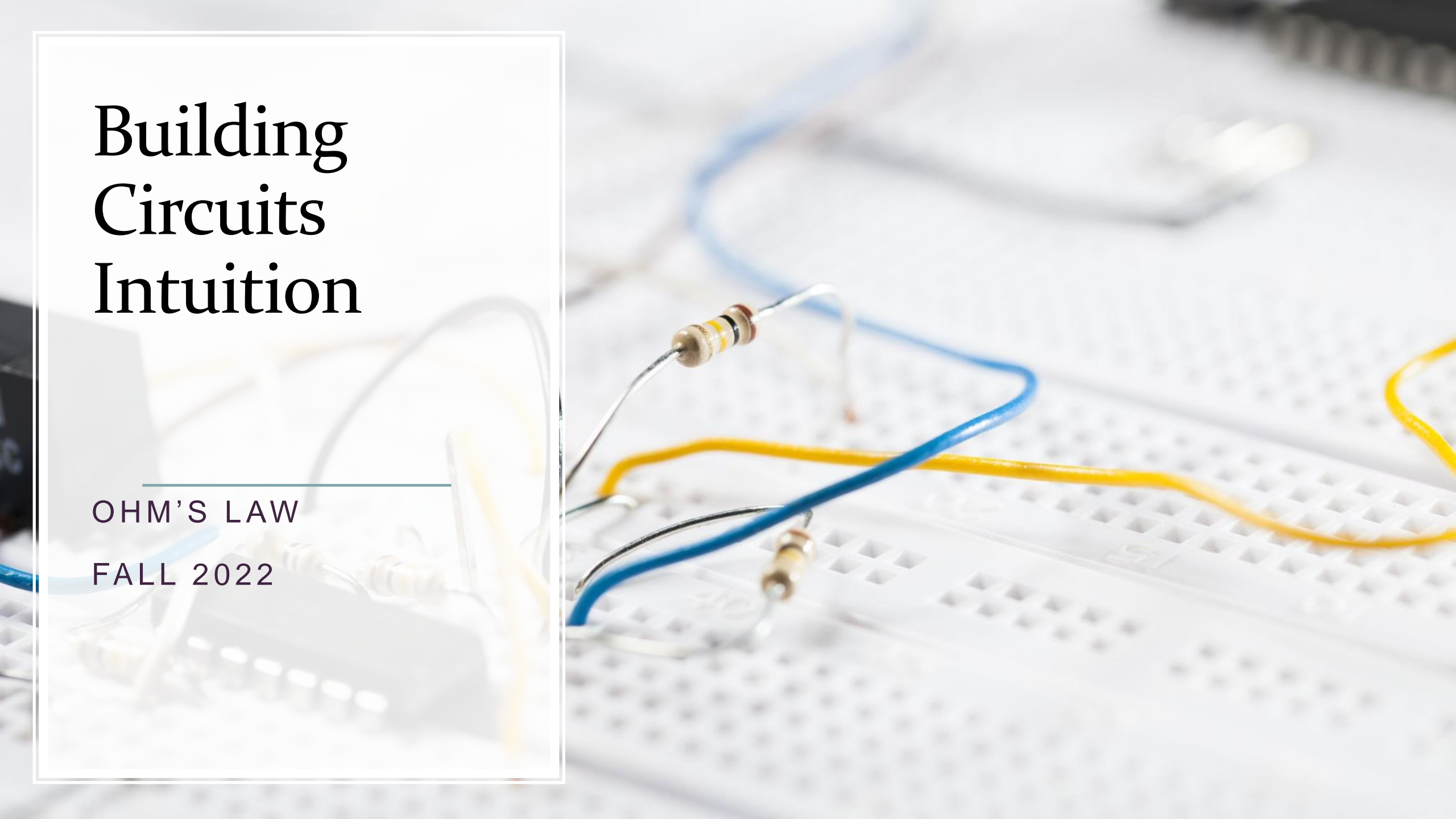


Building Circuits Intuition

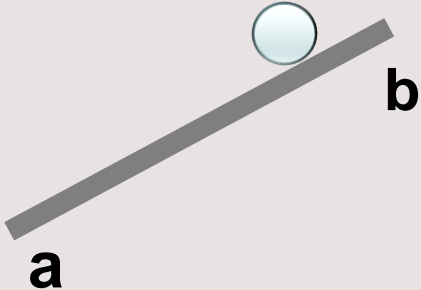
OHM'S LAW

FALL 2022

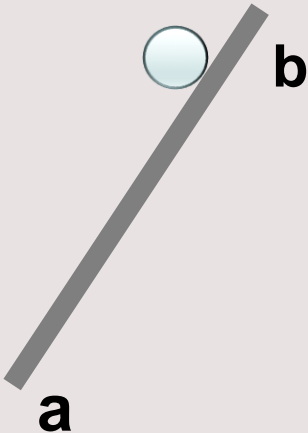


Losing(?) your marbles

[1]



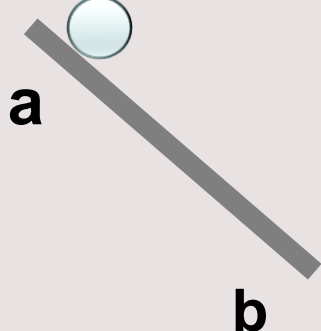
[2]




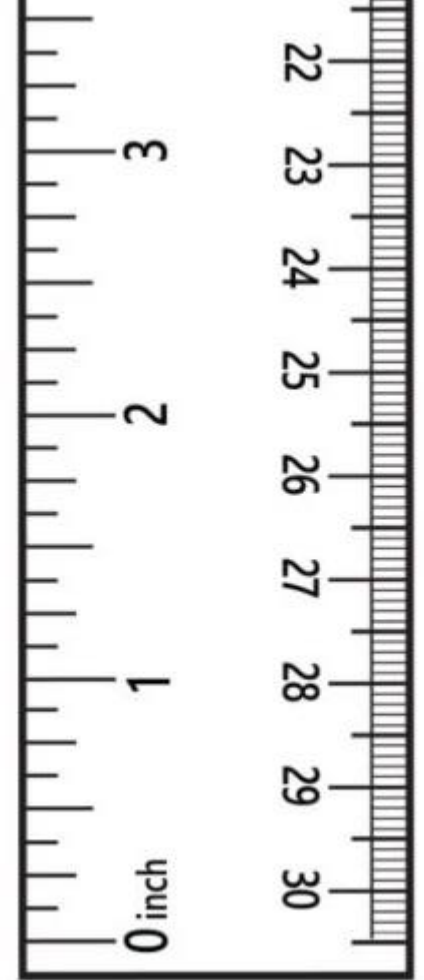
[3]



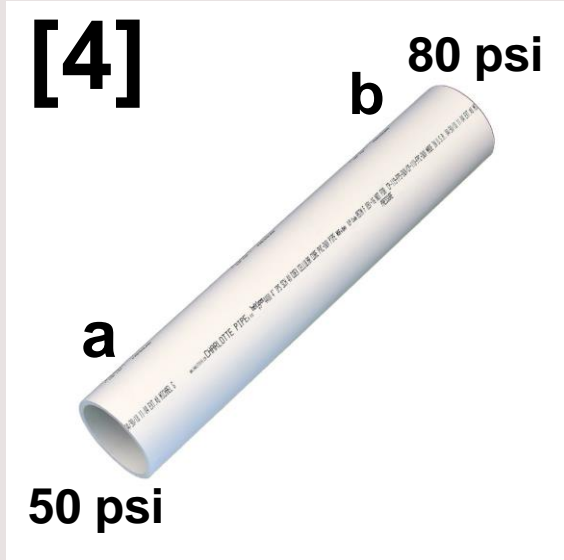
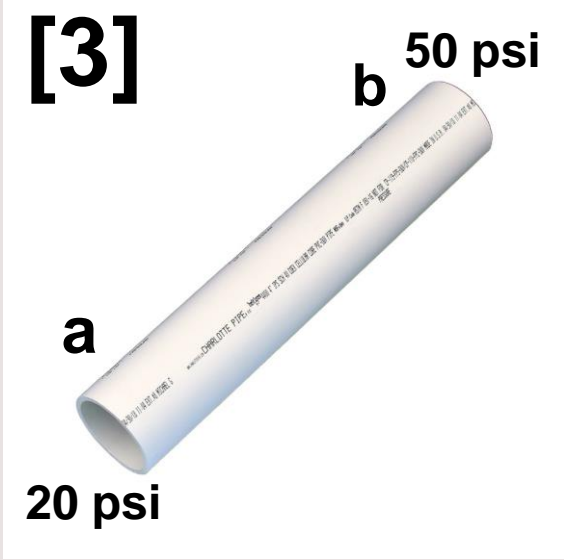
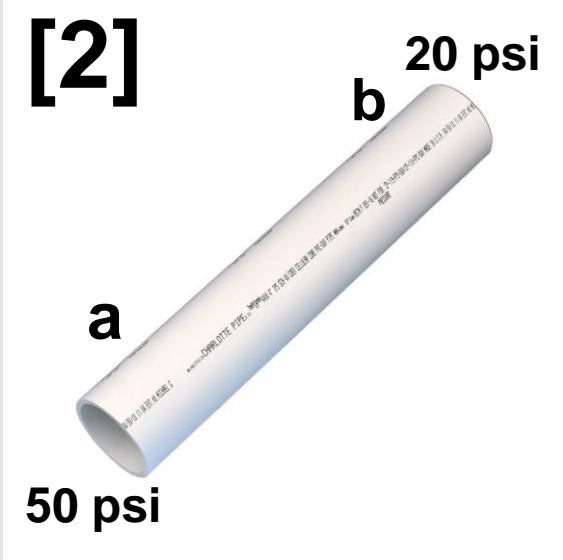
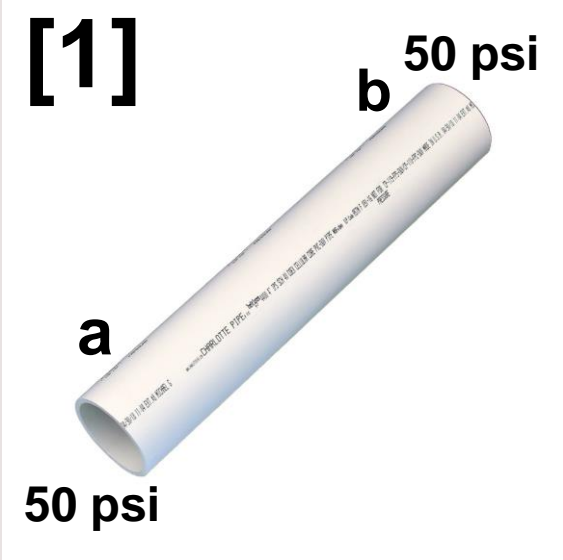
[4]



 $g = 9.8 \text{ m/s}^2$



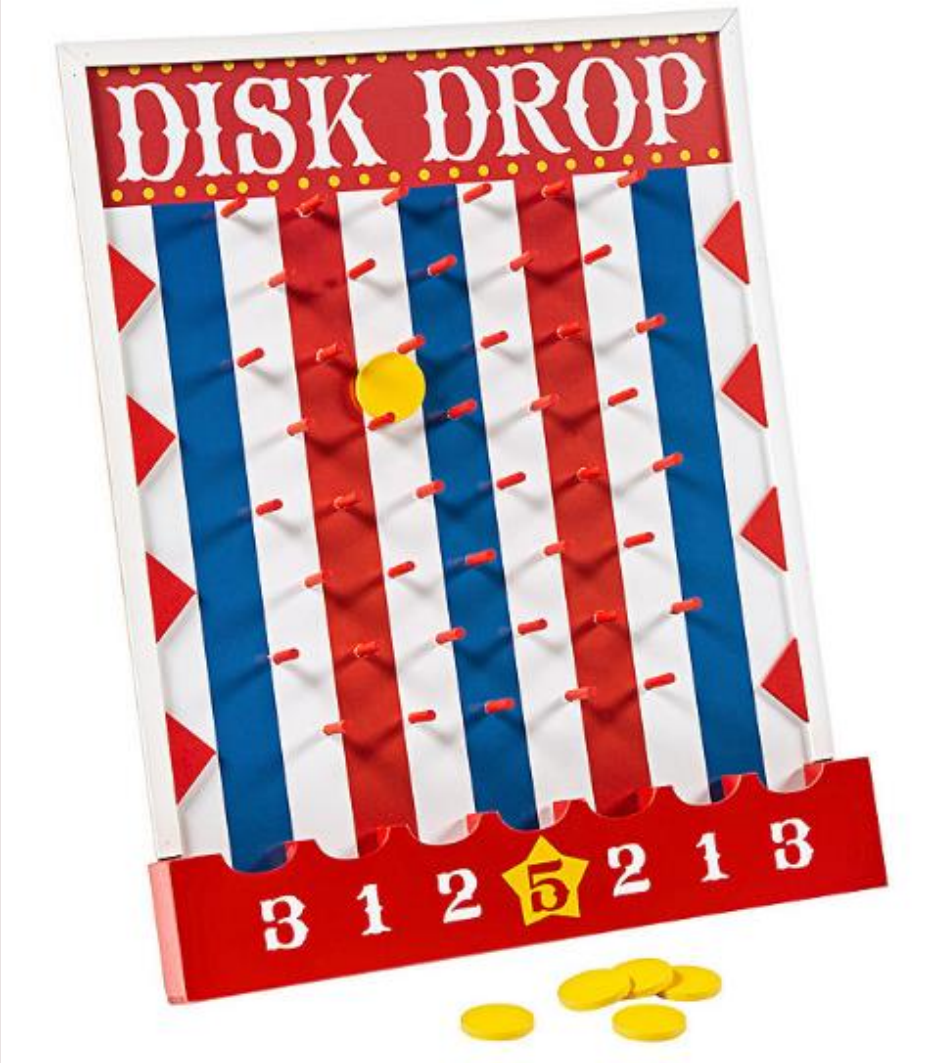
Pipe Dreams



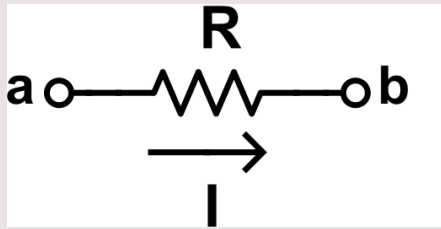
Dropping In



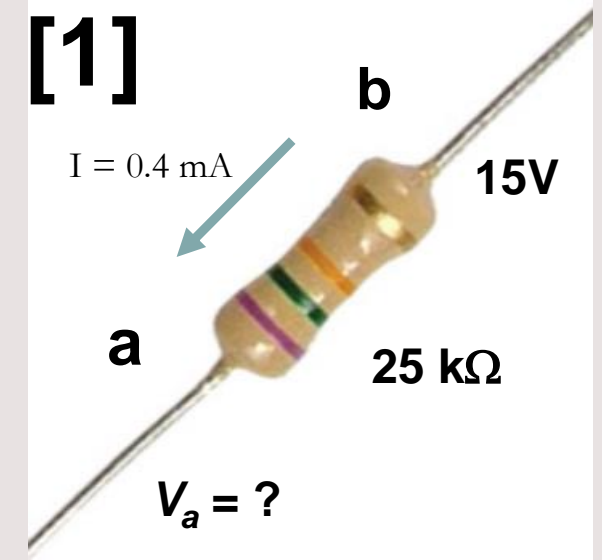
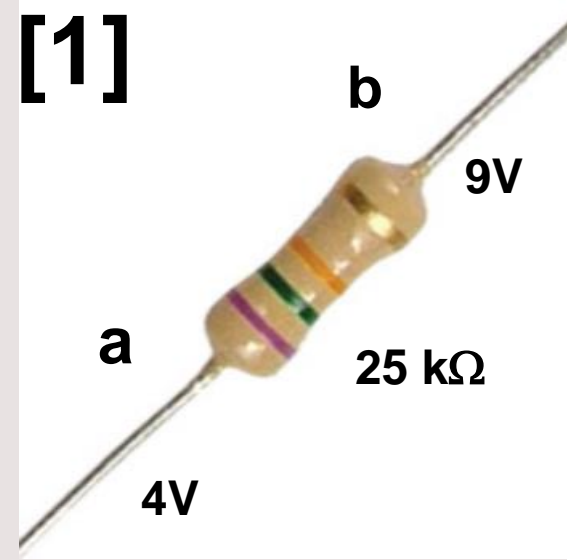
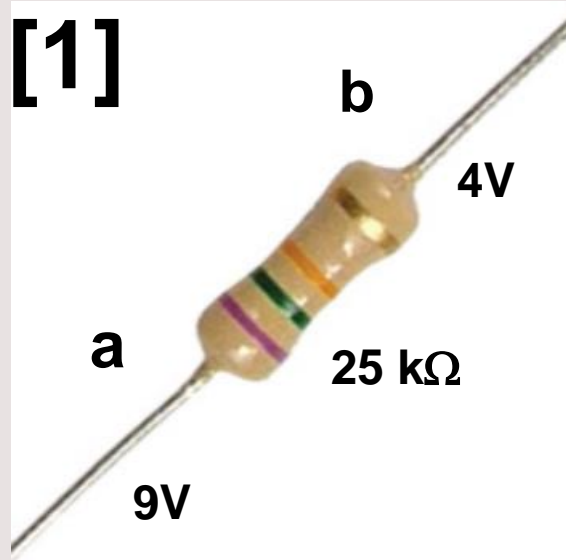
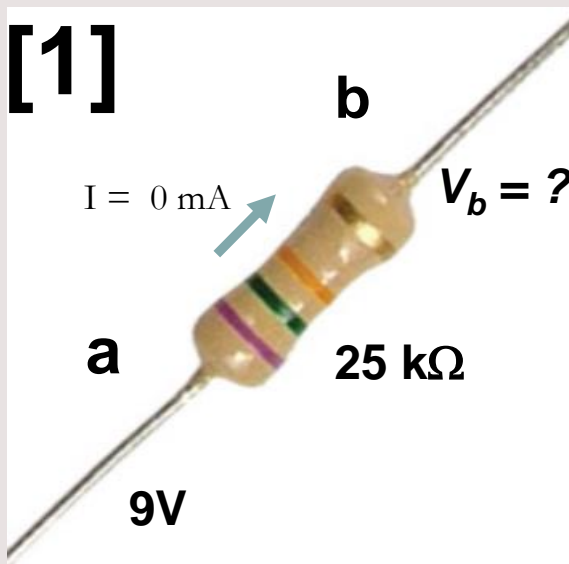
A B C D E F



Ooooooohhhmm's Law



$$I = \frac{\text{[]}}{\text{[]}}$$



Split Decision

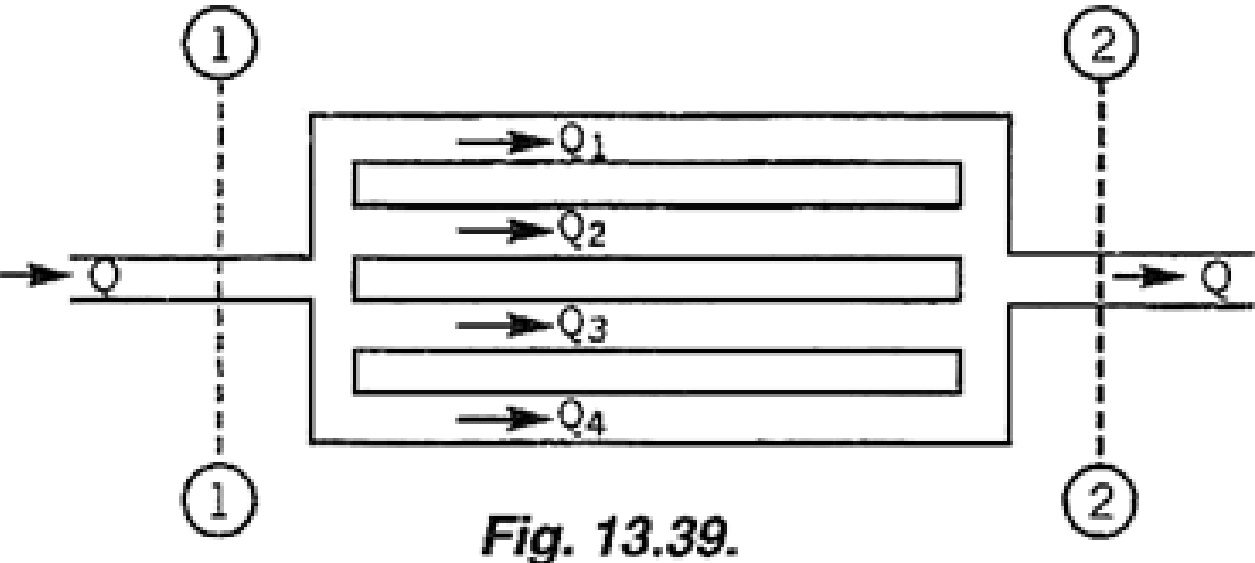
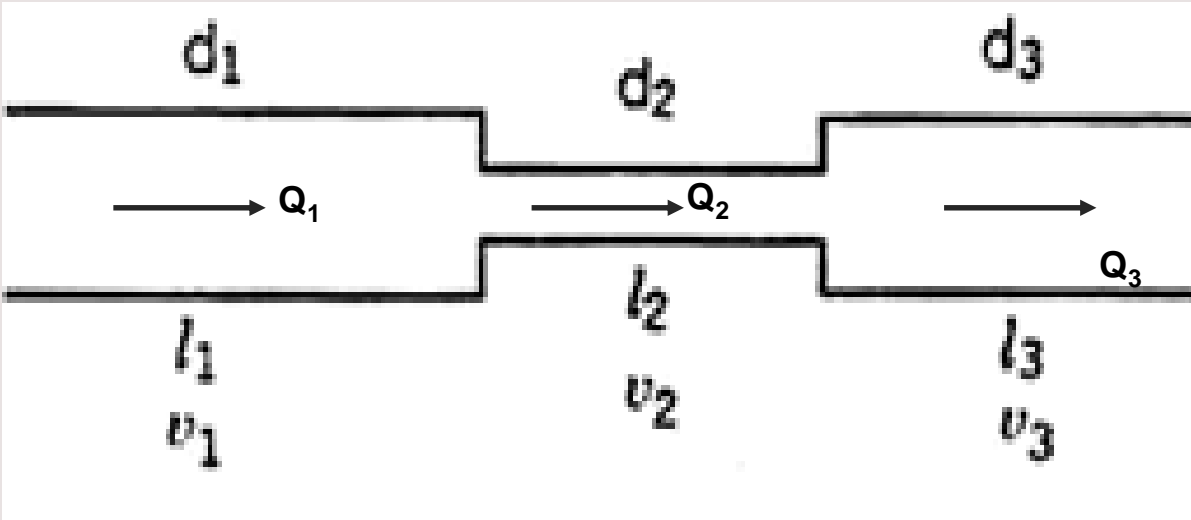
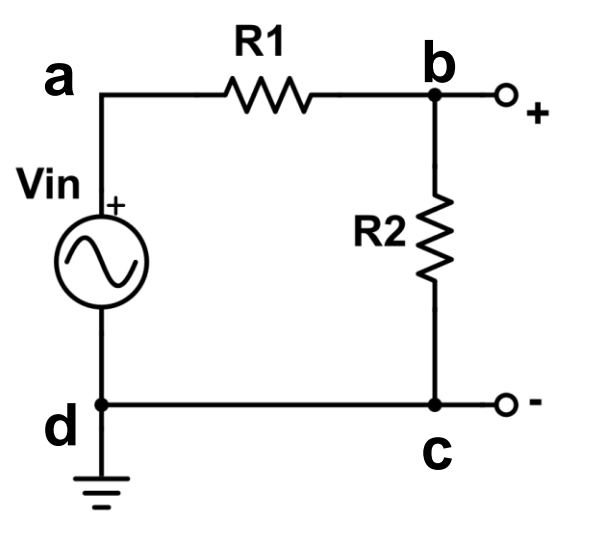


Fig. 13.39.



Walk in the Woods: Another type of circuit

Hiker completes circuit a-b-c-d-a



Slide on in: yet another circuit

Who doesn't love a good water slide! Describe all analogies to electrical circuits that you spot. Can you draw the analogous circuit?

